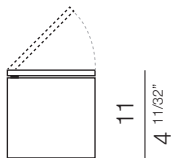


Cuboled



10x10
4"x4"



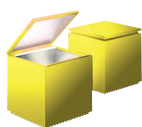
luminaire	
materials	technopolymers
environment	interiors
mounting location	table
emission	indirect and concentrated light
weight	0,5 kg
tension	230V
insulation class	2
IP classification	IP20
marks	CE
design	Franco Bettonica, Mario Melocchi, 1972

light source	
source	LED
number of led	1
power	2W
life	50.000 h
colour temperature	2.700 °K
CRI	≥ 90

finishes



flash colour fuchsia
cod 246L



flash colour yellow
cod 247L



flash colour green
cod 248L



grafiauno
cod 245L



violet
cod 141L



black nichel-plated
cod 293L



chrome
cod 289L



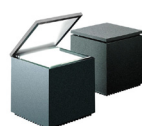
white
cod 136L



red
cod 137L



black
cod 138L



silk lacquer anthracite
cod 139L



metalized silver
cod 288L



five-colour
cod 294L