

Sestessina led cob



24
9 1/2"



17,5
6 3/4"

9
3 1/2"

luminaire	
materials	aluminium
environment	interiors
mounting location	wall
emission	indirect light
weight	1,0 kg
voltage	230V
ballast	integrated electronic dimmable
dimming	phase-cut
insulation class	1
IP classification	IP20
certifications	CE
design	Luta Bettonica, Mario Melocchi, 2009

light source	
source	LED
number of led	1
power	20W
luminous flux	1.700 lm
colour temperature	2.800 K
CRI	≥ 80
available at 3.000K / 3.500K / 4.000K	
for order ≥ 5 units	

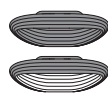
energy label



finishes



white
cod 219

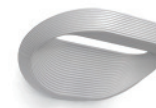


colour on demand
monocolour
bicolour

versions



sestessina alogena
white
cod 210



sestessina alogena
silver
cod 211